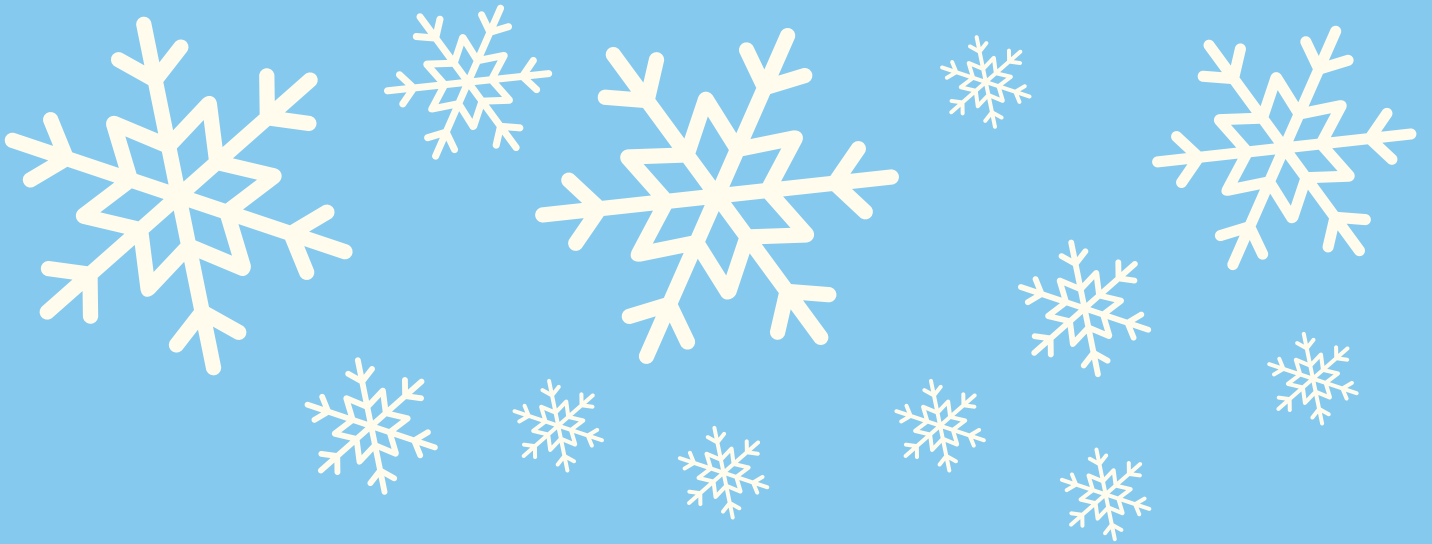


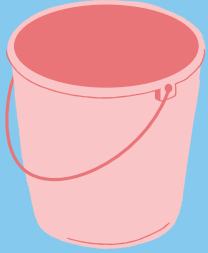
# WATER IN THE WINTERTIME!



[LAKEFRIENDLY.CA](http://LAKEFRIENDLY.CA)



# DID YOU KNOW...



**YOU CAN COLLECT SNOW IN AN EMPTY CONTAINER AND REUSE IT ONCE IT'S MELTED? LET'S EXPLORE!**

**REUSE THE SNOW TO WATER HOUSEHOLD PLANTS!**

1



2

**WASH OUT RECYCLABLES WITH MELTED SNOW!**

**REUSE THE SNOW TO MOP THE FLOOR OR CLEAN OUTDOOR FURNITURE!**

3



# WINTER WORD SEARCH



M S L A E R R V N T W E B D W  
L L A N A S T E I A B R T R R  
A U T V S E E B L I Z Z A R D  
S D S I I T S A L L S O I Z I  
W A S R W S U H M A I W S S R  
R L R W A R S R E E L I S L I  
S L R N T I E O W I L N D F A  
A R R A E V A W S E A T T H L  
T E A H R E T A W H S E R F I  
R D T O O R R I D Z U R W R L  
S E M R R S E T E Z A H A H W  
I H S U L S O E L S W L E S E  
W L N E Z U F W E T L A N D S  
T L O L A T T L I T A K T L D  
A W W E D L L S Z N T E T O L



WETLANDS

SNOW

SLUSH

LAKE

FRESHWATER



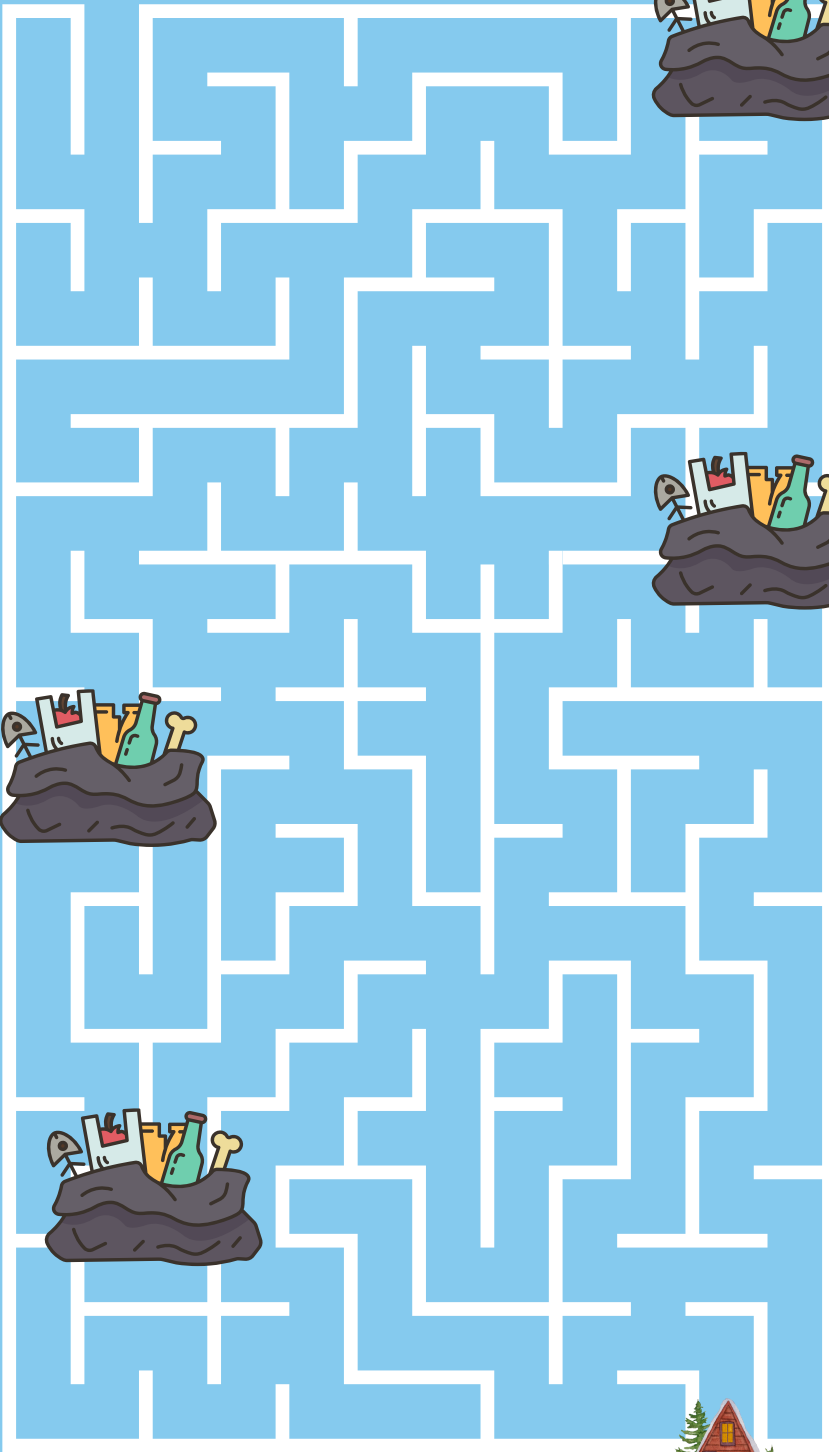
WINTER

RIVERS

WATER

MELT

BLIZZARD



**HELP THE SNOWMAN GET TO HIS HOUSE  
WHILE NAVIGATING POLLUTION!**



**DID YOU KNOW?**

**WATER PASSES THROUGH  
LAKE WINNIPEG AT AN  
AVERAGE OF THREE TO FIVE  
YEARS!**



**THE LAKE WINNIPEG  
WATERSHED IS  
THE 2ND LARGEST  
WATERSHED  
IN CANADA!**



**MANITOBA HAS 900 TRILLION  
LITRES OF SURFACE WATER,  
COVERING APPROXIMATELY  
16% OF THE PROVINCE!**



**THE WORD FOR LAKE  
WINNIPEG IN CREE IS  
"WINNIPI", MEANING MUDDY,  
DIRTY WATER!**

**LAKEFRIENDLY.CA**

